



St. Joseph School Plan to Return to In-Person Instruction for 2020-21 School Year

***“Instilling a Commitment to Faith, Encouraging the Family Spirit, and Strengthening a Dedication
to Excellence”***

TABLE OF CONTENTS.....	2
MESSAGE FROM OUR PRINCIPAL MR. HAYES.....	3
MISSION, VISION, & GUIDING PRINCIPLES	4
WHAT TO EXPECT WHEN WE RETURN	6
TIMELINE	7
HEALTHY & SAFE FACILITIES	8
SCHOOL CLEANING	9
DAILY SCHOOL ARRIVAL	10
STUDENT FACE COVERINGS	17
ADULT FACE COVERINGS	18
STARTING EACH SCHOOL DAY	19
INSTRUCTION	22
PHYSICAL DISTANCING IN THE CLASSROOM	24
RECESS, LUNCH, & PHYSICAL EDUCATION	26
DISMISSAL & AFTER SCHOOL CARE	27

UPDATED: Wednesday, February 24, 2021
at 7:05 a.m.

This is a fluid working document that maybe adjusted as conditions and/or guidance changes.

7-10-2020

Dear St. Joseph Parents and Students,

On behalf of our Pastor, faculty, and staff of St. Joseph School we would like to thank you for choosing to attend our school and for also trusting us with your children. During these times of uncertainty, we want to provide you with peace of mind and reassurance that your child will receive a high-quality Catholic education while remaining safe throughout the day. Each child will have the ability to practice their faith and receive instruction specific to each individual child's needs so that they can reach their maximum potential. St. Joseph School will adapt to the mandates issued by the Department of Catholic Health (CDPH) and the Archdiocese but will remain committed to developing the whole child through *Faith, Family, and Excellence*.

This document contains clear and explicit protocols, health and safety guidelines, and daily procedures on how we will maintain our campus safe for in-person instruction. This will require the patience, cooperation, and efforts of our entire school community including yourself and your family. This will be a process that we will persevere through together. As stay-at-home orders are modified, it is essential that all possible steps be taken to ensure the safety of all members of our school community. Key prevention practices include:

- physical distancing to the maximum extent possible
- teaching and maintaining social distancing
- use of face coverings by staff members, students, volunteers, and visitors
- entrance protocols, health checks, frequent handwashing and regular cleaning and disinfection
- training staff members, volunteers, and students on these and other elements of the COVID-19 prevention plan

In addition, it will be critical to have in place appropriate processes to identify new cases of illness and, when they are identified, to intervene quickly and work with public health authorities to halt the spread of the virus. We want to reinforce the fact that we are taking all safety precautions, enforcing good hygiene, and have updated our cleaning services, while also following the advice of the Center of Disease Control (CDC), the California Department of Public Health (CDPH), our local official's, Archbishop Gomez, and the Department of Catholic schools. As one united community, St. Joseph School will operate through our faith and for our children.

Lord, may you bless the world, give health to our bodies and comfort our hearts. You ask us not to be afraid. Yet our faith is weak and we are fearful. But you, Lord, will not leave us at the mercy of the storm. Tell us again: "Do not be afraid" (Mt 28:5). And we, together with Peter, "cast all our anxieties onto you, for you care about us" (1 Pet 5:7).

-Pope Francis Strong in the Face of Tribulation: A Sure Support in Time of Trial

The faculty and staff of St. Joseph School is committed to our loyal and dear families. We will remain vigilant over our children and one another as we continue to persevere through adversity. Ingenuity will steer us through this time of uncertainty and social change. However, it will be implemented with prudence and the preservation of our Catholic identity, and the "*Royals*" tradition of 70 years of Faith, Family, and Excellence. In addition to the guidelines set by the CDPH and the guidance of our local government officials the following document will outline the daily protocols that will be used at St. Joseph School La Puente.

May God Bless You and Keep You All,

Mr. Hayes, M.Ed & M.CSA (*Catholic School Administration*)
Principal

St. Joseph's Catholic School



MISSION, VISION, AND GUIDING PRINCIPLES

MISSION

FAITH

FAMILY

EXCELLENCE

GUIDING PRINCIPLES

Providing each child with the ability to practice their *Faith*, Catholic identity, & develop a personal relationship with God.

Collaborating & communicating as one school *Family* to promote safety, respect, & a high-quality Catholic education.

Utilize guidance documents from the ADLA & CDPH to provide the logistic, planning, & technology necessary to achieve academic *Excellence* while providing a healthy and safe learning environment.

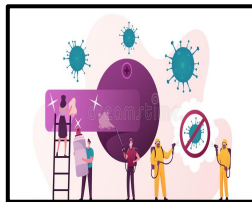
VALUES FOR RETURN



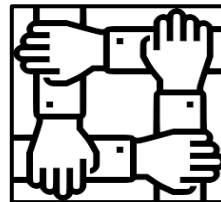
*Strong
Catholic Identity*



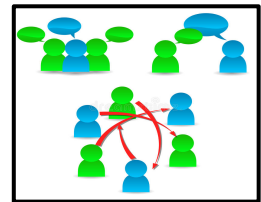
Respect



*Healthy & Safe
Facilities*

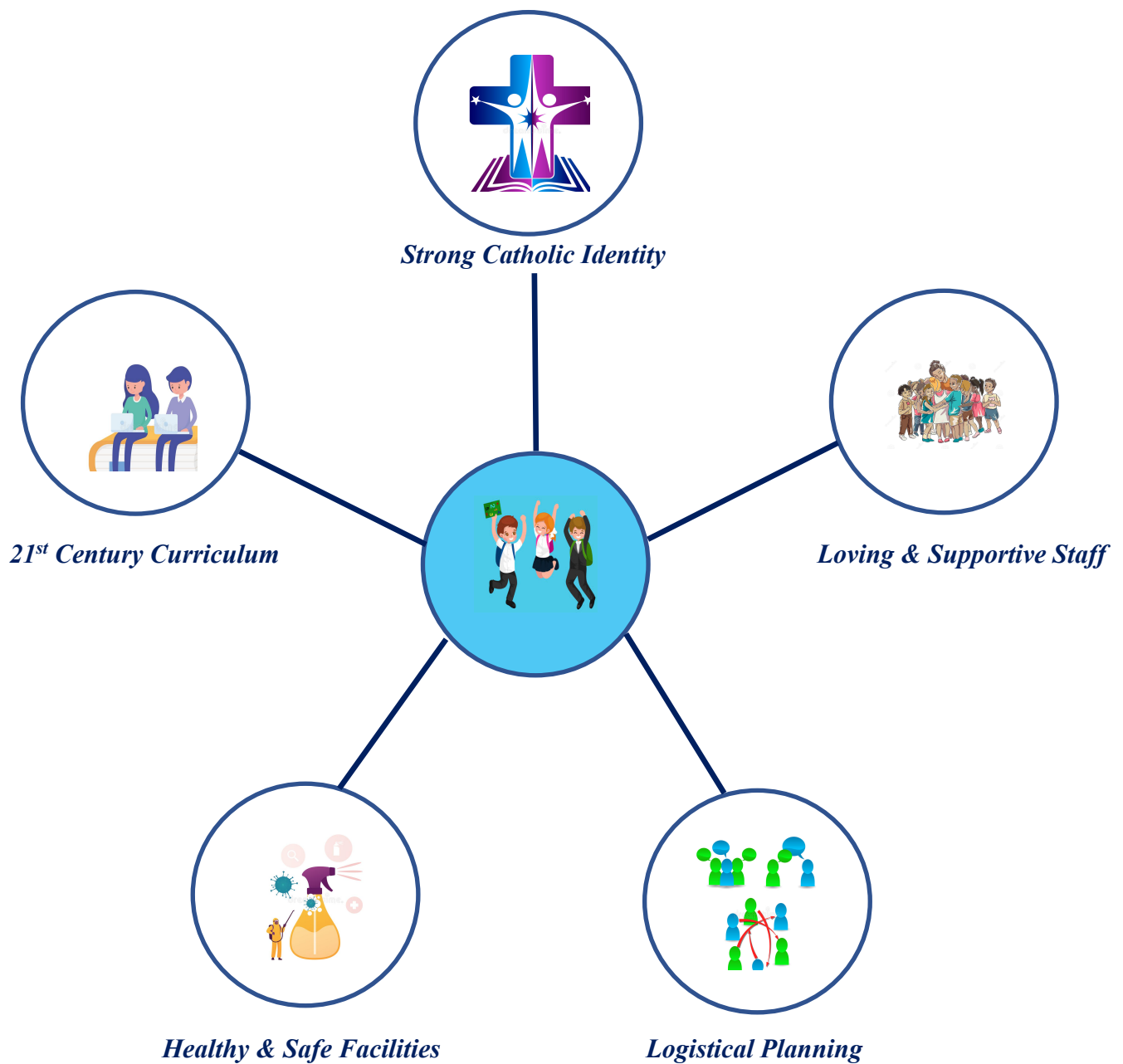


Collaboration



Communication

OUR CHILDREN ARE OUR PURPOSE

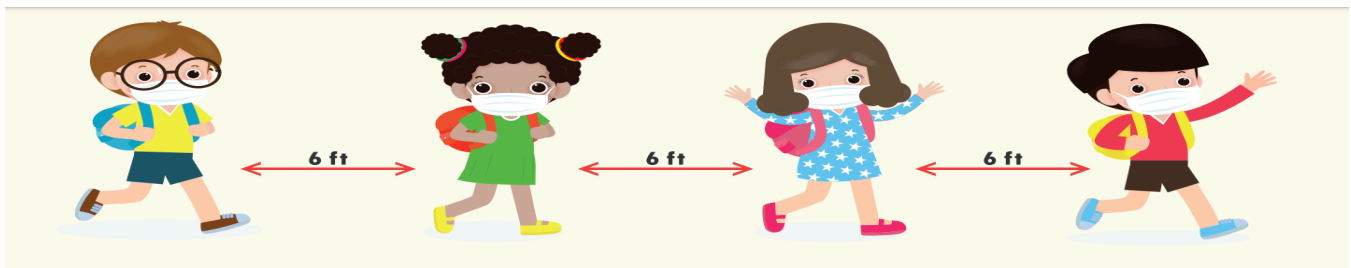


We will continue serve all of our families so that they can continue to work & make all decisions in the best interest & safety of each child.

WHAT TO EXPECT WHEN RETURN

To the Extent Possible:

- **Normal Schedule with all students attending school 5 days a week**
- **Early release days will remain on Fridays but with Noon dismissal**
- **Differentiation, small group instruction, and blended learning environments with more access to technology**
- **Specific times and activities for socialization, Mass, and Sacraments**
- **Keep students in the same classroom with the same people**
- **Serve individually plated menu items**
- **Restrict large gatherings such as assemblies**
- **Monitoring everyone health throughout the day**
- **Athletics will be offered but must follow all current CIF guidelines**



Required Guidelines:

- **Follow CDPH guidelines for school and Mass**
- **Daily temperature checks and health screenings**
- **All adults will be required to wear masks or face shields**
- **Students desks will be spaced 4 to 6 feet apart**
- **Teachers desks will be spaced 6 feet apart**
- **Staggered recess, lunch, and dismissal times**
- **Identify a location for students who are not feeling well to minimize contact with others until they are able to go home.**
- **Face to face interactions in the Front Office will be behind a physical barrier**
- **All students and staff will be encouraged and give time to wash their hands regularly**
- **Social Distance Modification for attending Mass, PE, and Choir Classes**
- **Field Trips are currently not recommended**

FLEXIBILITY

IN THE EVENT THERE IS A RESURGENCE OF COVID-19 OR ANY COMMUNICABLE DISEASES SCHOOLS MAY BE REQUIRED BY CALIFORNIA DEPARTMENT OF PUBLIC HEALTH TO MODIFY SCHOOL SCHEDULES. WE HAVE PREPARED A CONTINUUM OF OPTIONS AS A CONTINGENCY PLAN TO VARIOUS POSSIBILITIES.



Time Line to Reopen:

JUNE 2020

JULY 2020

AUGUST 3, 2020

AUGUST 10, 2020

AUGUST 17, 2020

- **FACULTY COLLABORATION**
- **ACQUIRE ALL TEXTBOOKS, TECHNOLOGY, DIGITAL LICENSES, NECESSARY CLEANING SUPPLIES & MATERIALS**
- **CONTINUE COMMUNICATION & COLLABORATION WITH ADLA, CDPH, PARISH, AND PARENTS**
- **FACULTY & STAFF RETURN TO CAMPUS**
- **ST. JOSEPH FEAST DAY CELEBRATION & RIBBON CUTTING**
- **SUPPLIES DROP OFF**
- **FRONT OFFICE OPENS FOR THE SCHOOL YEAR**
- **1ST DAY OF SCHOOL**
- **1ST TRIMESTER BEGINS**
- **STAR TESTING WINDOW #1 OPENS**

HEALTHY & SAFE FACILITIES

St. Joseph School has been extremely blessed by Shea Catholic Charities. The school received a complete remodel with auspicious timing. The bathrooms have been remodeled to meet the latest safety guidelines. All drinking fountains are brand new, filtered, & also serve as a bottle filling station. Students are encouraged to bring their own refillable water bottle so that they can use the new water fountains effectively.

The classrooms have been completely remodeled with the emphasis on safety & instruction. New operable windows, shades, ceiling fans, AC fixtures, and doors have been installed to improve ventilation. Customized cubbies & new student desks will safeguard students' materials & keep them separated.

As a whole, our school has intensified cleaning, disinfection, & ventilation. The faculty & staff will clean and disinfect frequently touched surfaces within the school throughout the school day as well as shared objects between uses. Signs will be posted in the classrooms and throughout the campus on how to stop the spread of COVID-19, proper handwashing, the promotion of everyday protective measures, & how to properly wear a face covering.

IN ORDER TO ENSURE PROPER HYGIENE, WE WILL REQUIRE THAT STUDENTS AND STAFF WASH THEIR HANDS. HIGH USE AREAS AND ITEMS WILL BE WIPED DOWN AT REGULAR INTERVALS. STUDENTS AND STAFF WILL BE TRAINED AND REMINDED ON A FREQUENT BASIS ON PROPER HYGIENE, CLEANING, PHYSICAL DISTANCING PROTOCOLS, ETC.

THERE WILL BE A REGULAR SCHEDULE FOR THE USE OF RESTROOMS AT DESIGNATED TIMES, INCLUDING LIMITING THE NUMBER OF STUDENTS THAT ENTER THE RESTROOMS. THE USE OF SCHEDULE WILL ALSO LIMIT THE MIXING OF DIFFERENT STUDENT COHORTS.

STUDENTS AND STAFF WILL BE GIVEN FREQUENT OPPORTUNITIES TO WASH THEIR HANDS FOR 20 SECONDS WITH SOAP, RUBBING THOROUGHLY AFTER APPLICATION AND USING PAPER TOWELS TO DRY HANDS THOROUGHLY.



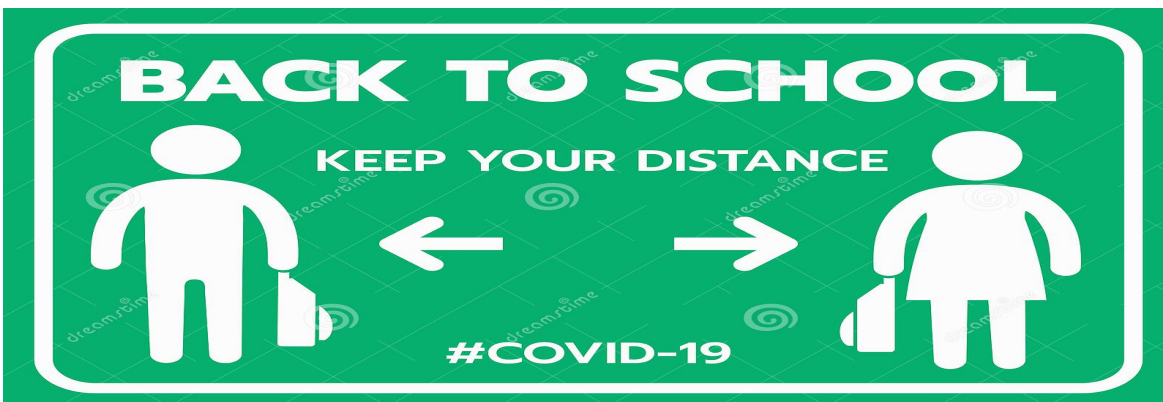
ALL HAND DRYERS HAVE BEEN REMOVED FROM ALL SCHOOL RESTROOMS. FREQUENTLY SCHEDULED MANDATORY HANDWASHING BREAKS OR OPPORTUNITIES (ESPECIALLY FOR YOUNGER STUDENTS) WILL OCCUR AT MINIMUM:

- **BEFORE AND AFTER EATING**
- **AFTER USING THE RESTROOM**
- **AFTER OUTDOOR PLAY**
- **BEFORE AND AFTER ANY GROUP ACTIVITY**

THE STAFF HAS BEEN INSTRUCTED TO MODEL AND MONITOR FREQUENT AND PROPER HANDWASHING, ESPECIALLY IN LOWER GRADES WHERE BATHROOM TIME IS AN OPPORTUNITY TO REINFORCE HEALTHY HABITS.

SCHOOL CLEANING

**PRIOR TO REOPENING CAMPUS DAILY, THE ENTIRE SCHOOL
WILL BE COMPLETELY CLEANED AND DISINFECTED**



PART OF RETURNING TO IN-PERSON INSTRUCTION WILL BE:

- **PURCHASING A SUFFICIENT NUMBER OF NO-TOUCH THERMAL SCAN THERMOMETERS FOR SYMPTOM SCREENINGS**
- **HAVING ADEQUATE SUPPLIES TO SUPPORT HEALTHY HYGIENE BEHAVIORS AND A PLAN FOR AN ONGOING SUPPLY OF PROTECTIVE EQUIPMENT**
- **KEEP SUFFICIENT PROTECTIVE EQUIPMENT STOCK ON HAND TO COMPLIANCE WITH CDPH GUIDANCE FOR STUDENTS AND STAFF APPROPRIATE FOR EACH CLASSIFICATION OR DUTY, AS WELL AS RELEVANT CAL/OSHA REQUIREMENTS INCLUDING**
 - **SOAP, DISINFECTANT, & CLEANING SUPPLIES**
 - **HAND SANITIZER WITH AT LEAST 60 PERCENT ALCOHOL (FOR STAFF AND OLDER CHILDREN WHO CAN SAFELY USE HAND SANITIZER)**
 - **SINGLE USE PAPER TOWELS & TISSUES**
 - **GLOVES**
 - **NO-TOUCH TRASH CANS**
 - **CLOTH FACE MASKS, FACE SHIELDS FOR TEACHERS & YOUNG STUDENTS**
- **FOR FRONT OFFICE, FOOD SERVICE EMPLOYEES & EMPLOYEES ENGAGING IN SYMPTOM SCREENING, THE SCHOOL WILL PROVIDE MASKS, FACE SHIELDS, AND DISPOSABLE GLOVES.**
- **RELIGIOUS EDUCATION PROGRAMS WILL OPERATE AT THE DISCRETION OF THE PASTOR. IN-PERSON INSTRUCTION AND USE OF CLASSROOM SPACE PROTOCOLS OUTLINED IN THIS DOCUMENT APPLY TO RELIGIOUS EDUCATION CLASSES AS WELL.**

DAILY SCHOOL ARRIVAL

TO ENSURE THE SAFETY OF ALL STUDENTS, FACULTY, AND THEIR FAMILIES PROPER SCREENING AND MONITORING OF ALL INDIVIDUALS IS NECESSARY. IT IS ALSO IMPERATIVE THAT OUR SCHOOL REMAINS COMPLIANT WITH THE CDC AND THE CDPH GUIDELINES FOR SCHOOLS. THIS INCLUDES THE DEVELOPMENT, IMPLEMENTATION, AND DOCUMENTATION OF PROCEDURES TO CHECK FOR SIGNS AND SYMPTOMS OF STUDENTS AND EMPLOYEES DAILY. DAILY HEALTH CHECKS (E.G. TEMPERATURE SCREENING AND/OR SYMPTOMS CHECKING) OF STAFF AND STUDENTS WILL BE CONDUCTED DAILY, SAFELY, AND WITH THE UTMOST RESPECT.

THE MANDATORY SCREENING OF STUDENTS AND EMPLOYEES UPON ARRIVAL WILL BE FOR SYMPTOMS AND HISTORY OF EXPOSURE. THE DATA THAT IS COLLECTED WILL BE CONFIDENTIAL AND ONLY SHARED WITH PUBLIC HEALTH AND ARCHDIOCESAN OFFICIALS. FOR THESE REASONS ST. JOSEPH SCHOOL REQUESTS ANYONE WHO IS SICK TO STAY HOME. IN THE EVENT, A PERSON DIAGNOSED WITH COVID-19 IS DETERMINED TO HAVE BEEN IN THE BUILDING AND POSES A RISK TO THE COMMUNITY, THE SCHOOL MAY CONSIDER CLOSING FOR A SHORT TIME (1-2 DAYS OR WEEKS) FOR CLEANING AND DISINFECTION.

HOME HEALTH SCREENING



- **PARENTS ARE STRONGLY ADVISED TO MONITOR FOR SYMPTOMS AT HOME**
- **PLEASE KEEP CHILDREN WHO ARE SICK AT HOME UNTIL THEY ARE FEVER AND VOMIT FREE (WITHOUT MEDICATION) FOR 24 HOURS**
- **DAILY HEALTH CHECKS WILL BE PERFORMED ON-SITE CONSISTING OF TOUCHLESS TEMPERATURE CHECK AND HEALTH SCREENING**
- **STUDENTS WILL BE MONITORED FOR SIGNS OF ILLNESS THROUGHOUT THE DAY**

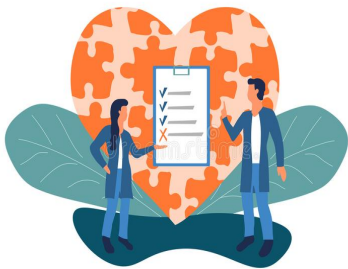
SCHOOL HEALTH CHECKS



- EVERYONE MUST HAVE THEIR TEMPERATURE CHECKED VIA NO-TOUCH THERMAL SCAN THERMOMETERS. IF A STUDENT, PARENT OR TEACHER HAS A FEVER OF 100.4 OR HIGHER, WILL NOT BE ALLOWED TO ENTER THE SCHOOL.
- BEFORE ENTERING CAMPUS, ALL STUDENTS (OR GUARDIANS ON BEHALF OF STUDENTS) MUST RESPOND TO A BRIEF HEALTH SCREENING
- IF A STUDENT (OR GUARDIAN ON BEHALF OF THE STUDENT) RESPONDS “YES” TO ANY OF THE SCREENING QUESTIONS, HE/SHE MUST NOT ENTER THE SCHOOL BUILDING
- SCREENING WILL INCLUDE QUESTIONS CONCERNING COUGH, SHORTNESS OF BREATH, FEVER, AND ANY OTHER ABNORMAL SYMPTOMS THE STUDENT MAY BE EXPERIENCING
- PLEASE, REFER TO *APPENDIX A* TO SEE THE LIST OF SCREENING QUESTIONS. THE COLLECTION OF THIS DATA WILL BE USED TO COMMUNICATE AND MONITOR DEVELOPMENTS WITH LOCAL AUTHORITIES, EMPLOYEES, AND FAMILIES REGARDING CASES, EXPOSURES, AND UPDATES TO POLICIES AND PROCEDURES.
- THIS WILL PREPARE THE SCHOOL TO CONSULT WITH THE LOCAL HEALTH AUTHORITIES IF THERE ARE INDEED CASES IN THE FACILITY OR AN INCREASE IN CASES IN THE LOCAL AREA.
- ALL DATA COLLECTED IS CONFIDENTIAL. CONFIDENTIALITY WILL BE MAINTAINED AND WILL BE IN ACCORDANCE WITH APPLICABLE PRIVACY LAWS OR REGULATIONS.

WE STRONGLY RECOMMEND THAT YOU USE THE SAME QUESTIONNAIRE TO CONDUCT YOUR OWN HOME HEALTH CHECK BEFORE LEAVING FOR SCHOOL. THESE QUESTIONS WILL BE LAMINATED AND POSTED ON ALL ENTRANCES FOR DAILY USE.

HEALTH CHECKS THROUGHOUT THE DAY



- **EVERYONE MUST HAVE THEIR TEMPERATURE CHECKED VIA NO-TOUCH THERMAL SCAN THERMOMETERS. IF A STUDENT, PARENT OR TEACHER HAS A FEVER, HE/SHE MUST NOT ENTER THE SCHOOL BUILDING.**
- **BEFORE ENTERING CAMPUS, ALL STUDENTS (OR GUARDIANS ON BEHALF OF STUDENTS) MUST RESPOND TO A BRIEF HEALTH SCREENING**
- **IF A STUDENT (OR GUARDIAN ON BEHALF OF THE STUDENT) RESPONDS “YES” TO ANY OF THE SCREENING QUESTIONS, HE/SHE MUST NOT ENTER THE SCHOOL BUILDING**
- **SCREENING WILL INCLUDE QUESTIONS CONCERNING COUGH, SHORTNESS OF BREATH, FEVER, AND ANY OTHER ABNORMAL SYMPTOMS THE STUDENT MAY BE EXPERIENCING**
- **PLEASE, REFER TO *APPENDIX A* TO SEE THE LIST OF SCREENING QUESTIONS. THE COLLECTION OF THIS DATA WILL BE USED TO COMMUNICATE AND MONITOR DEVELOPMENTS WITH LOCAL AUTHORITIES, EMPLOYEES, AND FAMILIES REGARDING CASES, EXPOSURES, AND UPDATES TO POLICIES AND PROCEDURES.**
- **THIS WILL PREPARE THE SCHOOL TO CONSULT WITH THE LOCAL HEALTH AUTHORITIES IF THERE ARE INDEED CASES IN THE FACILITY OR AN INCREASE IN CASES IN THE LOCAL AREA.**
- **ALL DATA COLLECTED IS CONFIDENTIAL. CONFIDENTIALITY WILL BE MAINTAINED AND WILL BE IN ACCORDANCE WITH APPLICABLE PRIVACY LAWS OR REGULATIONS.**

THERE WILL BE MONITORING OF FACULTY, STAFF, AND STUDENTS THROUGHOUT THE DAY FOR SIGNS OF ILLNESS.



IN THE EVENT OF



- STUDENTS, FACULTY, AND STAFF WITH A FEVER OF 100.4 DEGREES OR HIGHER, WHO SHOW COUGHING, FATIGUE OR SHORTNESS OF BREATH, OR WHO DISPLAY OTHER COVID-19 SYMPTOMS WILL BE ISOLATED AND SENT HOME IMMEDIATELY.
- ANY STUDENTS, FACULTY, OR STAFF EXHIBITING SYMPTOMS WILL IMMEDIATELY BE REQUIRED TO WEAR A FACE COVERING AND BE REQUIRED TO WAIT IN AN ISOLATION AREA UNTIL THEY CAN BE TRANSPORTED HOME OR TO A HEALTHCARE FACILITY, AS SOON AS PRACTICABLE.
- IN THE EVENT THAT AN INDIVIDUAL DEVELOPS A FEVER OR FLU OR COLD-LIKE SYMPTOMS DURING THE SCHOOL DAY THE PE OFFICE WILL BE PROVIDED TO AS AN ISOLATION ROOM.
- PARENTS WILL BE CONTACTED IMMEDIATELY TO PICK UP THEIR CHILD(REN).
- IF A STUDENT HAS TO SELF-QUARANTINE THEY WILL BE ALLOWED TO ZOOM INTO CLASS FOR ATTENDANCE
- SCHOOL ATTENDANCE WILL BE ACCOMMODATING TO INDIVIDUAL STUDENT'S NEEDS & CIRCUMSTANCES

School Decision Tree

All Schools Regardless of Community Spread



Assess Risk

Short (potential 2-5 Day) Building Dismissal to Clean/Disinfect/Contact Trace in consultation with local health officials

No Community Spread

- Prepare
- Teach and reinforce healthy hygiene
- Develop information sharing systems
- Intensify cleaning and disinfection
- Monitor for absenteeism
- Assess group gatherings and events – consider postponing non-critical gatherings and events
- Require sick students and staff stay home
- Establish procedures for someone becoming sick at school

Monitor changes in community spread

Minimal to Moderate OR Substantial Community Spread

M/M

Is community spread Minimal to Moderate or Substantial?

S

- Coordinate with local health officials.
- Implement multiple social distancing strategies for gatherings, classrooms, and movement through the building.
- Consider ways to accommodate needs of children and families at high risk.

- Coordinate with local health officials.
- Implement multiple social distancing strategies for gatherings, classrooms, and movement through the building WITH EXTENDED SCHOOL DISMISSALS.
- Consider ways to accommodate needs of children and families at high risk.



Timeline of Infection: Window of Opportunity

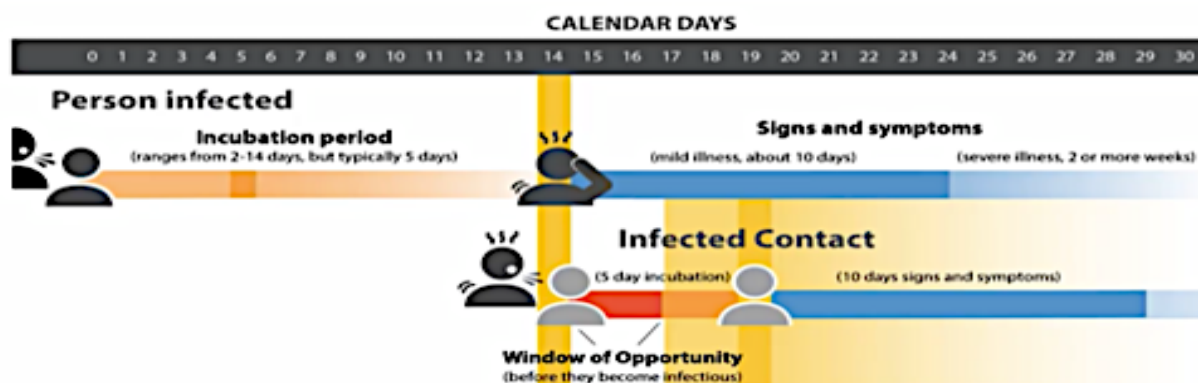


Image source: Center for Teaching and Learning, Johns Hopkins Bloomberg School of Public Health.

STUDENTS RETURNING BACK TO SCHOOL AFTER A POSITIVE TEST

- **AFTER A POSITIVE DIAGNOSIS IS MADE, STUDENTS SHOULD EXPECT TO BE IN ISOLATION FOR AT LEAST 10 DAYS AFTER THE TEST, AND POTENTIALLY LONGER IF THEY CONTINUE TO REMAIN SYMPTOMATIC.**
 - **HERE IS WHAT I HAVE:**
 - **10 DAYS ISOLATION**
 - **14 DAYS OF QUARANTINE**
 - **NO SYMPTOMS**
 - **NO FEVER 24 HRS**
 - **NO MEDICINE IN 24HRS**
 - **A NOTE FROM A DOCTOR**
 - **ST. JOSEPH SCHOOL RESERVES THE RIGHT TO BE MORE RESTRICTIVE**
- **STUDENTS SHOULD NOT RETURN TO SCHOOL UNTIL THEY HAVE BEEN CLEARED BY SCHOOL ADMINISTRATION WHO WILL WORK DIRECTLY WITH FAMILIES WHEN THEY ARE CLEARED BY THE PUBLIC HEALTH AND READY TO RETURN TO SCHOOL.**

FACULTY AND STAFF ARRIVAL



- **ALL CLASSROOM TEACHERS, PERSONNEL, AND ADMIN MUST REPORT TO CAMPUS BY 7:00 A.M.**
- **THEY WILL REPORT TO A DESIGNATED AREA WHERE THEY WILL BE SCREENED, HAVE THEIR TEMPERATURE.**
- **ANY INDIVIDUALS THAT EXHIBIT FEVER OR FLU-LIKE SYMPTOMS WILL NOT BE ALLOWED TO ENTER.**
- **BY 7:10 A.M. ALL CLEARED PERSONNEL WILL BE ASSIGNED TO A SPECIFIC ENTRANCE ON THE CAMPUS WHERE THEY WILL CONDUCT HEALTH SCREENINGS**
- **OUR SCHOOL HAS ADOPTED THE CAL-OSHA CPP MODEL TO EFFECTIVELY ENFORCE COVID-19 SAFETY PROTOCOLS**
- **SOCIAL DISTANCE MUST BE PRACTICED DURING LUNCH BREAKS. IF A TEACHER LEAVES CAMPUS THEY WILL BE HAVE TO PASS A HEALTH SCREEN BEFORE RETURNING**

STUDENT AND PARENT ARRIVAL



- TO HELP PARENTS EFFICIENTLY DROP OFF THEIR CHILDREN IN A SAFE AND TIMELY MATTER OUR MORNING CARPOOL WILL CONTINUE TO TAKE PLACE IN THE SCHOOL BLACKTOP ON TEMPLE AVE.
- MORNING CARPOOL WILL BE AVAILABLE FROM 7:10 A.M. TO 7:55 A.M.
- ONLY THE INDIVIDUALS THAT ARE ENTERING THE CAMPUS WILL BE SCREENED AS THEY EXIT THEIR VEHICLE.
- STUDENTS CANNOT JUST BE DROPPED OFF.
- DEPENDING ON THE AGE OF A STUDENT, PARENTS MAY BE ASKED THE SCREENING QUESTIONS.
- PARENTS WILL HAVE THE OPTION OF PARKING IN THE LA PUENTE PARK PARKING LOT OR AT THE PARISH PARKING LOT.
- NO ONE WILL BE ALLOWED TO PARK IN THE FACULTY OR RECTORY PARKING LOT.
- THE FRONT OFFICE AND THE HALL ARE NOT AN ENTRY POINT BEFORE 7:45 A.M. (EXPECT ON RAINY DAYS) THE FRONT OFFICE WILL ONLY BE OPEN TO RECEIVE PHONE CALLS AND HELP PARENTS.
- IF YOU ARE WAITING TO BE SCREENED FOR ENTRY WE ASK THAT YOU PLEASE MAINTAIN A SAFE DISTANCE AND DO NOT COMINGLE WITH OTHERS.
- ALL GATES WILL BE LOCKED WHEN THE 7:45 A.M. BELL RINGS.

THE FOLLOWING GATES WILL BE DESIGNATED AS ADMISSIBLE ENTRY POINTS ON TO CAMPUS. (DIAGRAM 1)

- Entrance 1: Temple Ave. Carpool Gate
- Entrance 2: Side Kitchen Gate (*New*)
- Entrance 3: La Puente Park Parking Gate (*New*)
- Entrance 4: La Puente Park Gate (3rd Grade Gate)

RAINY DAYS

- Only covered entrances will be utilized on rainy days including the hall, front office, & La Puente Park Gate (*Entrance 4*)
- Students will report directly to their classroom after their health screening
- Dropoff will be from 7:00 a.m. to 8:20 a.m. on rainy days
- Students that arrive after 8:20 a.m. will be marked tardy

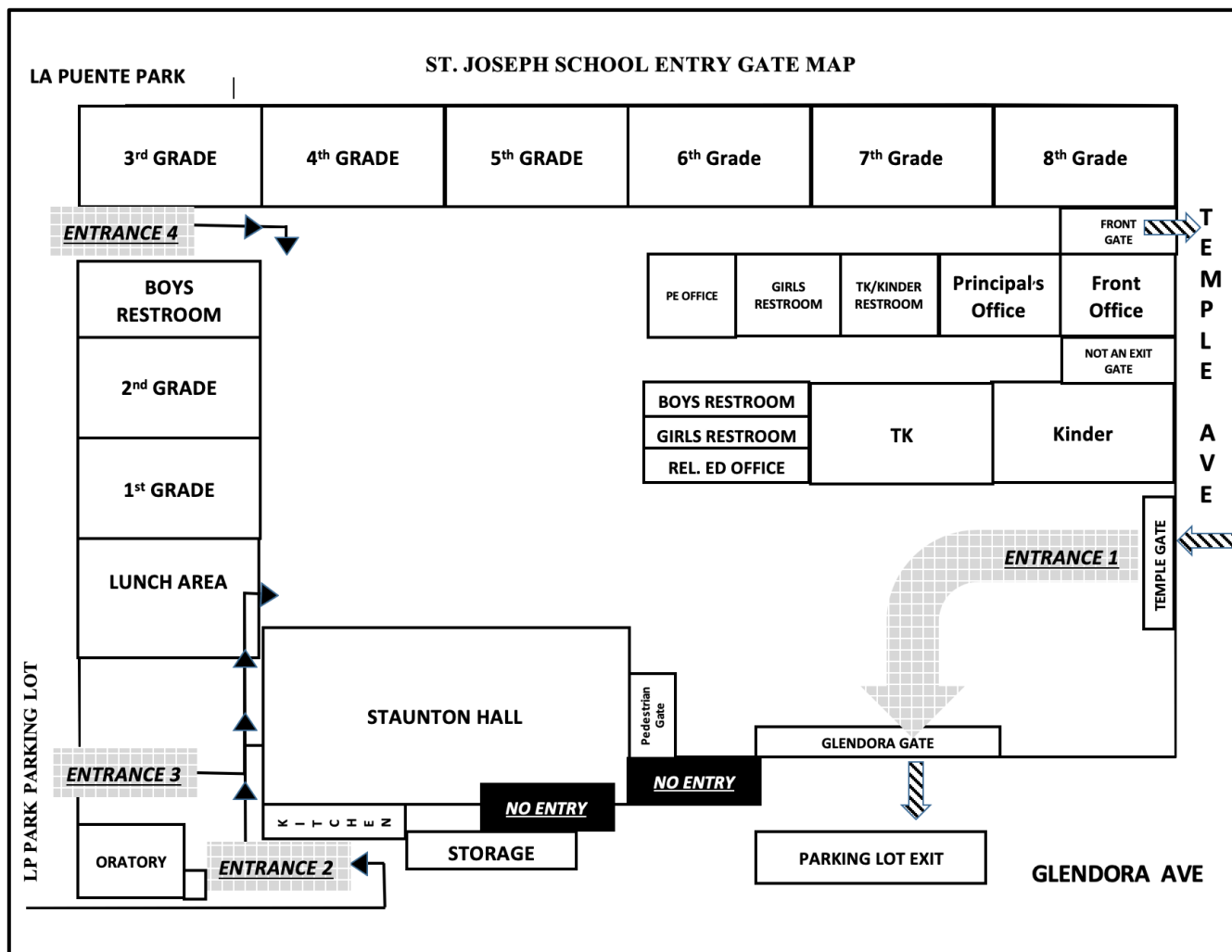


DIAGRAM 1. ST. JOSEPH SCHOOL ENTRY GATE MAP

- **THE SCHOOL DAY WILL OFFICIALLY BEGIN AT 8:00 A.M.**
- **NO ONE WILL BE ALLOWED ON CAMPUS WITHOUT BEING SCREENED AND CLEARED; INCLUDING PARENTS.**
- **IF EMPLOYEES, STUDENTS, OR PARENTS COME TO THE CAMPUS AFTER THE SCHOOL HAS STARTED THEN THEY MUST PARK THEIR CAR AND REPORT TO THE FRONT OFFICE WHERE THEY WILL BE SCREENED AND HAVE THEIR TEMPERATURE CHECKED.**
- **STUDENTS SHOULD COME TO SCHOOL IN THE APPROPRIATE UNIFORM DRESS FOR THAT DAY (MASS, PE, ETC.) AND HAVE ALL NECESSARY MATERIALS. THIS INCLUDES FACE MASKS AND SHIELDS.**

VISITING THE OFFICE

MEASURES ARE IN PLACE TO LIMIT RISK OF INFECTION DUE TO VISITS BY INDIVIDUALS OTHER THAN STAFF AND STUDENTS. ANYONE ENTERING THE SCHOOL IS REQUIRED TO WEAR A CLOTH FACE COVERING.

VISITORS ARE BY APPOINTMENT ONLY. VISITORS ARE INSTRUCTED TO COME TO THEIR APPOINTMENTS ALONE. IF A VISITOR MUST BE ACCOMPANIED BY ANOTHER PERSON (E.G., FOR TRANSLATION ASSISTANCE, OR BECAUSE THE VISITOR IS A MINOR, OR HAS MINOR STUDENTS) THEIR INFORMATION IS CAPTURED IN THE VISITOR LOG.



- VISITORS TO THE SCHOOL OTHER THAN PARENTS OF ENROLLED STUDENTS ARE LIMITED TO THOSE WHO ARE ESSENTIAL FOR THE SCHOOL'S OPERATION.
- PARENTS OF ENROLLED STUDENTS ARE ENCOURAGED TO CONDUCT BUSINESS WITH SCHOOL PERSONNEL REMOTELY WHEN POSSIBLE. RESOURCES SUCH AS ZOOM, VENMO, PHONE APPOINTMENTS, OR EMAIL CAN BE USED TO CONDUCT SCHOOL BUSINESS WITH PARENTS.
- VISITORS ARRIVING AT THE SCHOOL WITH NON-ENROLLED CHILDREN (E.G. YOUNGER SIBLINGS OF STUDENTS) MUST ENSURE THAT THESE CHILDREN STAY NEXT TO AN ADULT, AVOID TOUCHING ANY OTHER PERSON OR ANY ITEM THAT DOES NOT BELONG TO THEM, AND ARE MASKED IF 2 OR OLDER AND NOT AT RISK DUE TO A RESPIRATORY CONDITION.
- MOVEMENT OF VISITORS WITHIN THE SCHOOL IS LIMITED TO DESIGNATED AREAS SUCH AS THE RECEPTION OR LOBBY AREA, OFFICES, CONFERENCE OR MEETING ROOMS, AND PUBLIC REST ROOMS TO THE EXTENT FEASIBLE. VISITORS ARE INSTRUCTED THAT THEY MUST WEAR CLOTH FACE COVERINGS AT ALL TIMES WHILE IN THE SCHOOL.

STUDENT FACE COVERINGS

THE CDPH GUIDANCE ON FACE COVERINGS FOR STUDENTS USES FLEXIBLE LANGUAGE AND STATES THAT, **STUDENTS IN ALL GRADE LEVELS TK-12 ARE REQUIRED TO WEAR FACE COVERINGS AT ALL TIMES, WHILE AT SCHOOL, UNLESS EXEMPTED.**

A CLOTH FACE COVERING OR FACE SHIELD SHOULD BE REMOVED FOR MEALS, SNACKS, NAPTIME, OR WHEN IT NEEDS TO BE REPLACED. WHEN A CLOTH FACE COVERING IS TEMPORARILY REMOVED, IT SHOULD BE PLACED IN A CLEAN, SAFE AREA, CLEARLY MARKED WITH THE STUDENT'S NAME AND DATE, UNTIL IT NEEDS TO BE PUT ON AGAIN.



- WE ANTICIPATE THAT FOR SOME STUDENTS, WEARING A MASK CONSISTENTLY WILL BE AN ISSUE OF PRACTICALITY BUT WILL ASK THEM TO KEEP THEM ON THROUGHOUT THE DAY.
- THE SCHOOL WILL PROVIDE MASKS FOR STUDENTS
- FACE COVERINGS SHOULD BE WASHED REGULARLY WASHED AND KEPT CLEANED
- STUDENTS WITH ASTHMA OR OTHER HEALTH CHALLENGES MAY NOT BE ABLE TO WEAR A FACE COVERING.
- FACE SHIELDS WITH DRAPERY ARE ALSO APPROPRIATE ALTERNATIVES IF A MASK CANNOT BE WORN.

OUR UNIFORM COMPANY WILL OFFER FACE MASKS THAT MATCH OUR CURRENT UNIFORM HOWEVER IT IS NOT MANDATORY TO USE THOSE SPECIFIC MASKS. THE REQUIREMENT FOR MASKS IS THAT THEY ARE:

- SAFE FOR YOUR CHILD
- FIT PROPERLY AROUND THE NOSE AND MOUTH
- DO NOT PRESENT ANY CHOKING HAZARDS
- DO NOT HAVE ANY GRAPHIC ART, PRINT, OR LOGOS
- PREFERABLY YOU WILL HAVE YOUR CHILD'S NAME EMBROIDERED OR WRITTEN (WITH SHARPIE) ON THE MASK SO THAT WE CAN CLEARLY IDENTIFY EACH CHILD
- MEET PPE STANDARDS AND REGULATIONS

ADULT FACE COVERINGS



THE CDPH GUIDELINES USE MORE SPECIFIC LANGUAGE FOR THE FACULTY AND STAFF STATING THAT, “ALL STAFF SHOULD USE CLOTH FACE COVERINGS.

TEACHERS CAN USE FACE SHIELDS WITH DRAPERY, WHICH ENABLES YOUNGER STUDENTS TO SEE THEIR TEACHERS’ FACES AND TO AVOID POTENTIAL BARRIERS TO PHONOLOGICAL INSTRUCTION.”

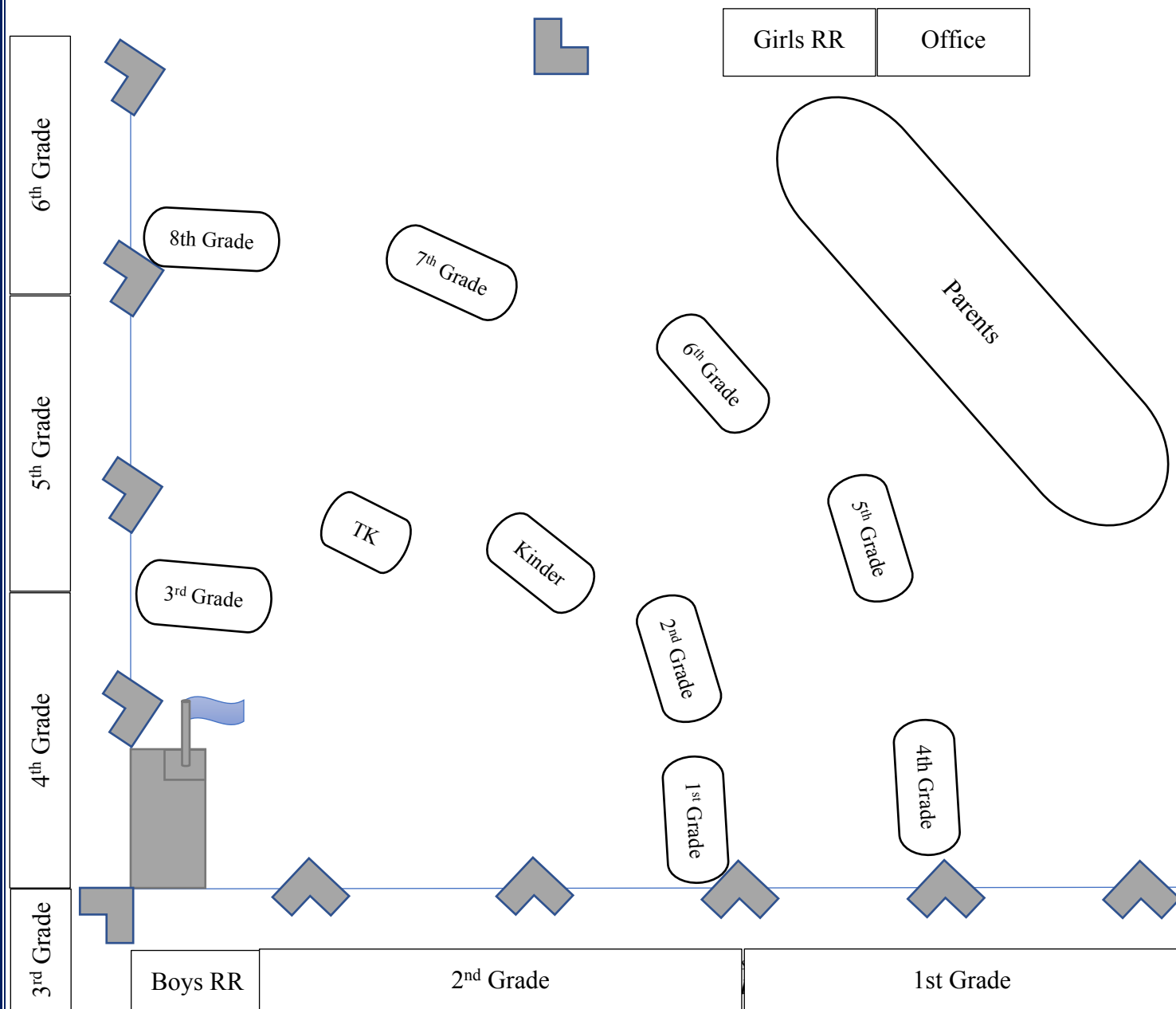
THUS, STAFF ARE REQUIRED TO WEAR FACE COVERINGS. ALL VISITORS, VOLUNTEERS, AND ALL OTHER ADULTS MUST WEAR FACE COVERINGS ON CAMPUS AT ALL TIMES.

- STAFF AND STUDENTS WHO ARE ALONE IN CLOSED OFFICES, WALLED CUBICLES OR OTHER PRIVATE, ENCLOSED SPACES ARE NOT REQUIRED TO WEAR CLOTH FACE COVERINGS.
- STUDENTS MAY ALSO REMOVE CLOTH FACE COVERINGS WHEN EATING OR NAPPING OR WHEN WEARING A CLOTH FACE COVERING IS OTHERWISE IMPRACTICABLE (E.G., WHILE SHOWERING, ETC.).
- THE SCHOOL MAY CONSIDER WHETHER IT IS APPROPRIATE FOR A TEACHER IN THE EARLY GRADES TO USE A PLASTIC FACE SHIELD WITH A TUCKED-IN DRAPE BELOW THE CHIN AS A SUBSTITUTE FOR A CLOTH FACE COVERING TO ENABLE THE YOUNGEST STUDENTS TO SEE THEIR TEACHER’S FACE AND AVOID POTENTIAL BARRIERS TO PHONOLOGICAL INSTRUCTION.

STARTING EACH SCHOOL DAY

AFTER INDIVIDUALS ARE SCREENED AND CLEARED TO ENTER THE CAMPUS THEY WILL BE ALLOWED TO ENTER THE SCHOOL'S COURTYARD OR VISIT THE FRONT OFFICE. SOCIAL DISTANCING THROUGH INCREASED SPACING, SMALL GROUPS, AND LIMITED MIXING BETWEEN GROUPS WILL BE STRICTLY ENFORCED.

FACULTY AND STAFF WILL BE PRESENT FOR SUPERVISION. NO PLAY OR SPORTING EQUIPMENT WILL BE ALLOWED. THE 7:45 A.M. BELL WILL SIGNAL TO EVERYONE THAT THEY SHOULD LINE UP FOR MORNING ANNOUNCEMENTS AND FOR THE FACULTY AND STAFF TO LOCK THEIR ASSIGNED ENTRY GATES. WE WILL HAVE OUR TRADITIONAL MORNING OFFERING, PRAYER, AND FLAG SALUTE AS A SCHOOL. THE CHILDREN WILL LINE UP AS ILLUSTRATED IN *DIAGRAM 2*:



MORNING OFFERING



- WHEN THE BELL RINGS ALL STUDENTS WILL LINE UP IN IN SLIGHTLY STAGGERED OR CHECKERED LINES.
- STUDENTS WILL BE APPROXIMATELY SIX FEET APART OR MORE FROM OTHER GRADES
- STUDENTS THAT ARRIVE AFTER MORNING ANNOUNCEMENTS HAVE STARTED WILL FALL INTO LINE.
- PARENTS ARE PERMITTED TO PARTICIPATE IN OUR MORNING OFFERING AS LONG AS THEY HAVE BEEN SCREENED, CLEARED, AND ARE ALSO PRACTICING SOCIAL DISTANCING GUIDELINES; WHICH INCLUDES WEARING A MASK.
- WE ASK THAT EVERYONE REFRAIN FROM MINGLING WITH OTHERS.
- CONCLUDING MORNING OFFERING EACH CLASS MUST TAKE THEIR SPECIFIC ROUTE.
- WE ASK PARENTS TO PLEASE STAND BEHIND THE CHILDREN DURING MORNING OFFERING AND EXIT IMMEDIATELY AFTERWARDS THROUGH THE GLENDORA GATE.
- IF YOU ARE VISITING THE FRONT OFFICE WE ASK THAT YOU PLEASE WAIT UNTIL ALL THE CHILDREN ARE IN THEIR CLASSROOMS BEFORE WALKING DOWN THE CORRIDOR.

AT THIS TIME, OUTDOOR ASSEMBLIES AND LARGE GATHERINGS OF ANY TYPE ARE NOT ALLOWED. HOWEVER, CHILDREN WILL STILL HAVE TO LINE UP IN THE SAME FASHION.

THE CURRENT PLAN IS:

- THE TRANSITIONAL KINDERGARTEN TEACHER AND KINDERGARTEN TEACHER WILL BE INSIDE THEIR CLASSROOM TO RECEIVE THEIR STUDENTS AT 7:10 A.M.
- THE PRINCIPAL AND OTHER STAFF WILL SUPERVISE THE STUDENTS AS THEY ENTER THE COURTYARD AREA.
- STUDENTS WILL BE ASKED TO REMAIN IN THEIR DESIGNATED AREA BEFORE SCHOOL STARTS.

ENTERING THE CLASSROOM



- EACH CLASS WILL HAVE A SPECIFIC ROUTE TO THEIR CLASSROOM.
- AT THIS TIME, *WE ASK PARENTS TO NOT FOLLOW THEIR CHILDREN INTO THE CLASSROOM.* ONLY FACULTY AND STAFF WILL BE PERMITTED INTO THE CLASSROOM.
- AS STUDENTS ENTER THE CLASSROOM THEIR TEACHER WILL STAND AT THE DOORWAY AND ISSUE HAND SANITIZER TO EACH STUDENT AS THEY WALK IN
- EVERY CHILD'S BELONGINGS WILL BE SEPARATED FROM OTHERS AND CLEARLY LABELED.
- EACH STUDENT HAS BEEN ISSUED A BRAND-NEW HAND-CRAFTED CUBBY IN THEIR HOMEROOM WHERE THEY CAN PLACE THEIR BACKPACK, LUNCH PAIL, BOOKS, CHROMEBOOKS, AND EDUCATIONAL MATERIALS OR SUPPLIES.
- SPECIFIC ITEMS MAY BE TAKEN HOME EACH DAY. STUDENTS WILL BE ASKED TO WIPE DOWN THEIR ASSIGNED AREAS AND MATERIALS THEY BRING FROM HOME.

LIMITED SHARING

- EACH STUDENT WILL HAVE INDIVIDUALLY LABELED PLASTIC PENCIL CASES AND CUBBIES.
- STUDENTS WILL BE PROVIDED WITH ADEQUATE SUPPLIES TO MINIMIZE SHARING OF HIGH-TOUCH MATERIALS TO THE EXTENT PRACTICABLE OR THE TEACHER WILL LIMIT THE USE OF SUPPLIES AND EQUIPMENT TO ONE GROUP OF CHILDREN AT A TIME AND CLEAN AND DISINFECT BETWEEN USES.
- ELECTRONIC DEVICES, BOOKS, AND OTHER LEARNING AIDS MAY BE SHARED BUT MUST BE WIPED DOWN AFTER EACH USE. STUDENTS WILL ALSO BE GIVEN HAND SANITIZER BEFORE AND AFTER EACH USE.
- WHENEVER POSSIBLE, AND AGE APPROPRIATE TEACHERS WILL ATTEMPT TO BE "PAPERLESS" AND ASK STUDENTS TO SUBMIT ASSIGNMENTS AND WORK DIGITALLY.
- STUDENTS ARE ENCOURAGED TO BRING THEIR OWN REFILLABLE WATER BOTTLE WITH THEIR NAME ON IT BUT ARE NOT ALLOWED TO SHARE WATER BOTTLES, CUPS, STRAWS OR FOOD.

INSTRUCTION

Saint Joseph School is a Catholic, student-centered learning community that provides a safe 21st century learning environment that includes opportunities for all members of the school community to practice their Catholic faith daily. The curriculum will continue to encompass:

- faith formation
- 1 to 1 Chromebook program (Grades 3 through 8) in blended learning environments with small group instruction
- Differentiation
- Multi-Tiered Systems of Support (MTSS) skills and strategies, Universal Screening (STAR & Freckle), Tier I, and II instructional time
- project-based learning
- fine arts, athletics, folklorico, clubs, & other socialization opportunities *(as permitted)*

BACK TO SCHOOL



THIS BALANCED CURRICULUM ENABLES ST. JOSEPH SCHOOL TO DEVELOP THE WHOLE PERSON IN EACH CHILD — SPIRITUALLY, INTELLECTUALLY, PSYCHOLOGICALLY, SOCIALLY, PHYSICALLY, AND ATHLETICALLY. THE INSTRUCTION PROVIDED WILL BE IN ALIGNMENT WITH:

- SCHOOL WIDE CURRICULUM EXPECTATIONS
- WASC/WCEA GOALS
- SCHOOL WIDE GOAL AND FOCUS FOR THE CURRENT SCHOOL YEAR

The purpose of instruction is to help students reach their maximum potential and learn skills that they can apply to their daily lives.

METHODOLOGY

REGULAR CLASSROOM, IN-PERSON INSTRUCTION WILL RESUME AS WE ALWAYS HAVE HAD. THE FACULTY AND STAFF WILL ENSURE THAT INSTRUCTIONAL EXPERIENCES INCLUDE THE SAME METHODOLOGY OF MODELING:

ADLA Methodology:

I: Guided instruction/Modeling

WE: Collaborative Modeling

TWO: Collaborative Practice

YOU: Independent Practice

- **THIS REQUIRES STRATEGIC USE OF SYNCHRONOUS (REAL TIME) & ASYNCHRONOUS (DIGITAL) LESSONS WITH STUDENT SPECIFIC DIFFERENTIATION IN A BLENDED CLASSROOM ENVIRONMENT.**
- **OUR CURRENT SITUATION IS A GREAT OPPORTUNITY FOR OUR FACULTY TO CONTINUE APPLYING THE MULTI-TIERED SYSTEMS OF SUPPORT (MTSS) SKILLS AND STRATEGIES THAT THEY HAVE ALWAYS APPLIED.**

To begin the 2020-21 school year the faculty and staff will attempt to pinpoint where each student is on their educational path. The faculty and staff have been vertical planning for each student since the Spring of 2020.

Formative assessment data, end of the year student portfolios, & teacher feedback will be used to plan instruction, student grouping, small group instruction, differentiation, daily classroom norms, & procedures, as well as the use of various digital platforms.

The school community will take on a growth Mind Set, to remain flexible, & work together to ensure that every student meets their individual goals. The faculty and parents will work together to ensure that everyone develops the knowledge, skills, & desire that are necessary so the disciplined habits are established.

Teachers will collaborate with one another and parents to coordinate assignments, deadlines, projects, logins, & assessments to ensure a manageable workload. In-person instruction will be offered daily however if distance learning becomes necessary all of the aforementioned items would be still be applicable. Varying the way content is delivered to students (reading, lecture/mini lesson, videos, visual tools, modeling) and the way students can demonstrate their understanding (writing, speaking, visual products, modeling/building) will help students retain skills and information that they will be able to apply in their everyday learning.

INSTRUCTIONAL DAYS & ATTENDANCE



- **THE MINIMUM INSTRUCTIONAL DAY REQUIREMENT IS STILL IMPORTANT FOR THE 2020-2021 ACADEMIC YEAR.**
- **PER THE ADLA HANDBOOK, A SCHOOL YEAR CONSISTS OF NO LESS THAN 180 DAYS**
- **WE TRACK STUDENT ATTENDANCE, WHETHER STUDENTS ARE ON OR OFF CAMPUS.**

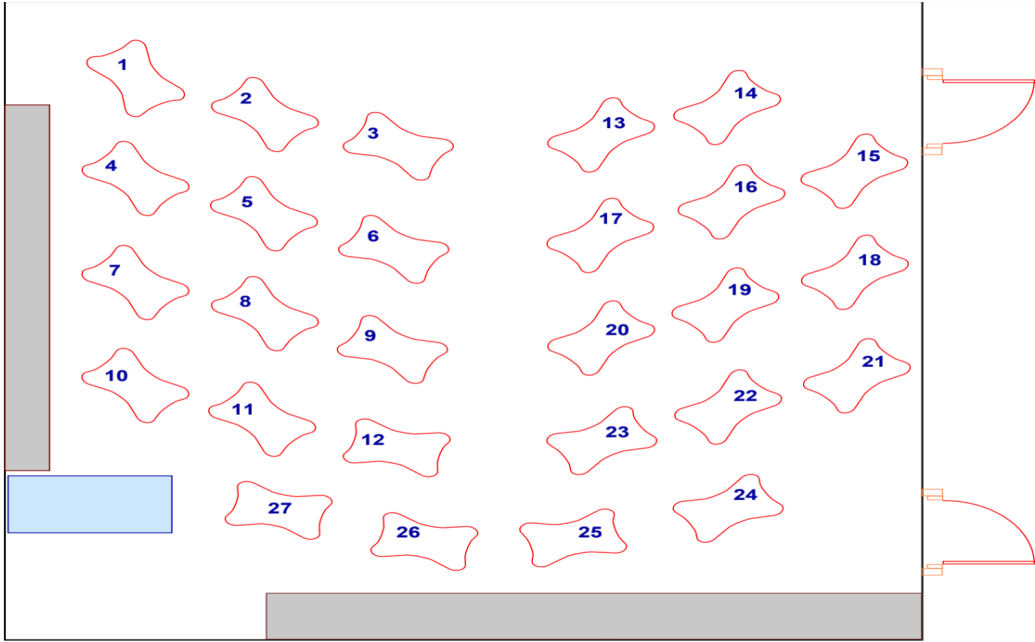
PHYSICAL DISTANCING IN THE CLASSROOM

THE CDPH GUIDANCE ON PHYSICAL DISTANCING STATES,
“MAXIMIZE SPACE BETWEEN SEATING AND DESKS. DISTANCE TEACHER AND OTHER STAFF DESKS AT LEAST SIX FEET AWAY FROM STUDENT DESKS. CONSIDER WAYS TO ESTABLISH SEPARATION OF STUDENTS THROUGH OTHER MEANS IF PRACTICABLE, SUCH AS, SIX FEET BETWEEN DESKS, PARTITIONS BETWEEN DESKS, MARKINGS ON CLASSROOM FLOORS TO PROMOTE DISTANCING OR ARRANGING DESKS IN A WAY THAT MINIMIZES FACE-TO-FACE CONTACT”

- DISTANCING BETWEEN THE TEACHER DESK AND STUDENTS WILL BE AT LEAST SIX FEET.
- ALL TEACHERS’ DESKS WILL BE LOCATED IN THE BACK OF THE CLASSROOM & FACE THE FRONT OF THE ROOM.
- DISTANCING BETWEEN STUDENT DESKS WILL BE SIX FEET *TO THE EXTENT POSSIBLE*.
- IF SIX FEET IS NOT POSSIBLE, THEN THE MINIMUM DISTANCE WILL BE NO LESS THAN FOUR FEET. STUDENTS MAY WEAR A MASK IN THE CLASSROOM.
- TO MINIMIZE CONTACT, DESKS WILL BE ARRANGED IN A CHECKERBOARD PATTERN AND FACING THE FRONT OF THE ROOM.
- TEACHERS WILL UTILIZE THE NEW OPERABLE WINDOWS, SHADES, CEILING FANS, & DOORS INCREASED VENTILATION
- EACH GRADE LEVEL WILL REMAIN SELF-CONTAINED TO THE EXTENT POSSIBLE
- SPECIALTY TEACHERS WILL TRAVEL TO AND FROM CLASSROOMS TO TEACH VARIOUS COHORTS OR GRADE LEVELS OF STUDENTS BUT STUDENTS WILL REMAIN IN THE SAME ROOM.
- SOCIAL DISTANCING IN OUTDOOR AREAS WILL BE UTILIZED ALONG WITH FACE SHIELDS TO CONDUCT MUSIC & CHOIR CLASSES.
- TECHNOLOGY WILL BE LEVERAGED TO MAXIMIZE PHYSICAL DISTANCE WHILE STUDENTS & TEACHERS ARE IN THE SAME CLASSROOM
- STUDENTS IN GRADES 3 THROUGH 8 WILL BE IN A 1 TO 1 CHROMEBOOK PROGRAM AND WILL BE ASSIGNED A CHROMEBOOK.
 - PARENTS ARE ENCOURAGED TO PURCHASE CASES AND KEYBOARD PROTECTORS FOR THEIR CHILD’S CHROMEBOOK.
- TRANSITIONAL KINDERGARTEN THROUGH 2ND GRADE WILL HAVE CHROMEBOOK CENTERS IN THEIR CLASSROOM.
- TEACHERS WILL ALSO BE PROVIDED WITH THE NECESSARY TECHNOLOGY TO PROJECT THEIR SCREENS ON TO THE WHITE BOARD & WILL CONTINUE TO USE DIGITAL PLATFORMS SUCH AS ZOOM TO PROJECT ON TO STUDENT DEVICES
- MORNING ANNOUNCEMENTS, THE ANGELUS/PRAYER, STUDENT COUNCIL ACTIVITIES, AND OTHER STUDENT ACTIVITIES WILL BE BROADCASTED TO THE CLASSROOMS.

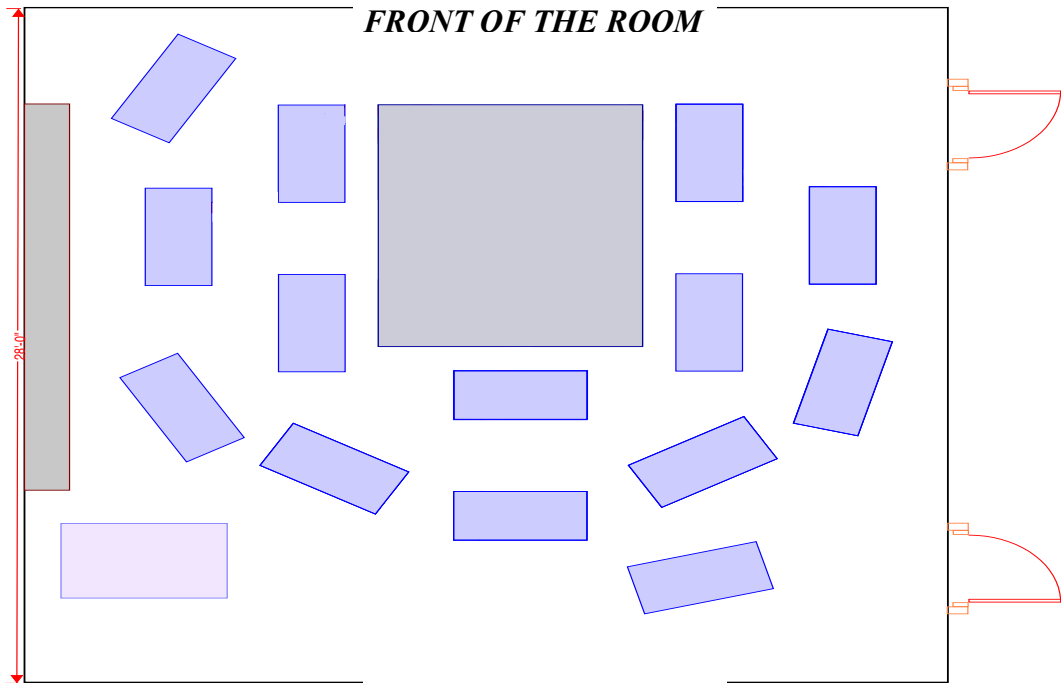
Social distancing rules will be observed in the classrooms. The ratio of students to the square footage of each room, the age of the students, and grade level have been factored into how each classroom will be layout. At the moment we will implement a half-circle, checkered layout with staggered rows. This will allow the teacher to actively engage students during whole group instruction (either physically or digitally) and also work in small groups. *DIAGRAM 3 illustrates a Typical Classroom Layout in grades K through 8.*

FRONT OF THE ROOM



BACK OF THE ROOM

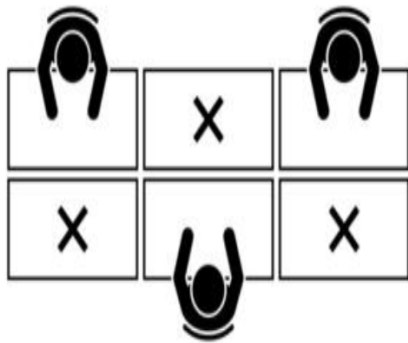
DIAGRAM 4 DISPLAYS THE TRANSITIONAL KINDERGARTEN LAYOUT



BACK OF THE ROOM

RECESS, LUNCH, & PHYSICAL EDUCATION

IN ORDER TO BE COMPLIANT WITH THE GUIDELINES FROM THE CDPH ALL RECESS & LUNCHTIMES WILL BE STAGGERED SO THAT STUDENTS WILL NOT INTERMINGLE. WITH THE CURRENT AMOUNT OF LUNCH TABLES, WE CAN ONLY SEAT APPROXIMATELY 50 CHILDREN AT A TIME WHILE ADHERING TO SOCIAL DISTANCING MANDATES. AT THIS TIME, WE WILL OBSERVE THE FOLLOWING SCHEDULE:



- TRANSITIONAL KINDERGARTEN WILL HAVE RECESS FROM 9:30A.M. TO 9:45A.M. LUNCH WILL BE IN THEIR CLASSROOM AT 11:30A.M. TO 12:10P.M.
- KINDERGARTEN, 1ST GRADE, & 2ND GRADE WILL HAVE RECESS FROM 9:45A.M. TO 10:00A.M. LUNCH WILL BE AT 11:30A.M. TO 12:10 P.M.
- 3RD, & 4TH GRADE WILL HAVE RECESS FROM 10:00A.M. TO 10:15A.M. LUNCH WILL BE AT 12:10A.M. TO 12:50P.M.
- 5TH GRADE WILL HAVE RECESS FROM 10:15A.M. TO 10:30A.M. LUNCH WILL BE AT 12:10A.M. TO 12:50P.M.
- 6TH, 7TH, & 8TH GRADE WILL HAVE RECESS FROM 10:15A.M. TO 10:30A.M. LUNCH WILL BE AT 12:50P.M. TO 1:30P.M.
- ALTERNATIVE LUNCHTIMES OR HAVING STUDENTS EAT IN THEIR CLASSROOMS WILL BE CONSIDERED ON RAINY DAYS.
- HOT LUNCH WILL BE CONTINUED TO BE OFFERED.
- EACH CHILD'S PLATE WILL BE SERVED INDIVIDUALLY, TO LIMIT THE USE OF SHARED SERVING UTENSILS AND ENSURE THE SAFETY OF CHILDREN WITH FOOD ALLERGIES.

Students will be allowed to socialize during lunch & recess but at this time will not be allowed to play with any sport equipment. TK & Kinder students can still take naps but will only be able to place their head on their desk. Until we receive further guidance children will not be allowed to participate in team sports or share play equipment. We will continue to utilize the park as permitted but will not use the playground.

Physical Education classes will be continued to be offered and students can come to school in their PE Uniform on their assigned day. The purpose of Physical Education classes will be to help students develop an increased lung capacity, achieve a healthy standing heart rate, and increase overall fitness so to improve their chances of overcoming any ailments.

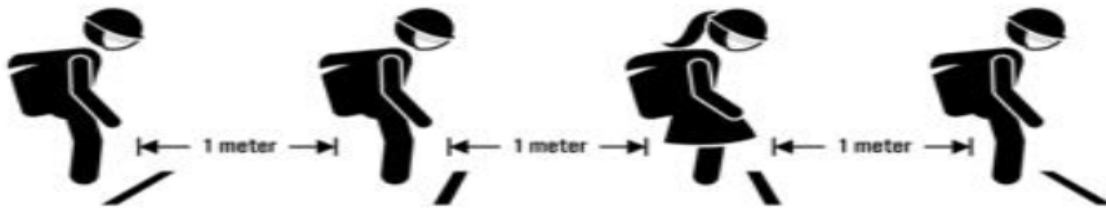
We are required to strictly adhere to the guidance from the California Interscholastic Federation ([CIF](#)). Activity will resume in CIF PHASE I ONLY at this time. Any deviation above and beyond PHASE I activity, or non-compliance of required modifications will come with restrictions including and up to an immediate shutdown of activity. PHASE I activity in no way extends permission for competition play. The state has not released guidance on the resumption of competitive athletic programs as of this time. Our Ballet Folklorico will follow the CIF guidelines for dance/cheer, or the most applicable guidance so that our students can safely participate. The school will update everyone as to when we can move to PHASE II.

DISMISSAL & AFTER SCHOOL CARE

A NEW DISMISSAL FORMAT WILL BE UTILIZED TO ENSURE EVERYONE'S SAFETY. DUE TO SOCIAL DISTANCING GUIDELINES WE WILL NO LONGER DISMISS CHILDREN FROM THE LUNCH AREA. CARS WILL NO LONGER BE PERMITTED TO DRIVE INTO THE CAMPUS FOR PICK UP.

WE WILL LEVERAGE THE NEW GATES THAT LEAD TO THE PARK TO HAVE DISMISSAL IN THE PARK PARKING LOT USING A CARPOOL LINE. PARENTS WILL ALSO BE TO PARK & PHYSICALLY PICK UP THEIR CHILDREN.

THERE WILL BE NO CARPOOL LINE ON RAINY DAYS. ALL CHILDREN WILL HAVE TO BE PICKED FROM THEIR CLASSROOMS OR DESIGNATED AREAS. PARENTS WILL HAVE TO BE SCREENED BEFORE ENTERING THE SCHOOL AT SPECIFIC ENTRANCES. EVERYONE WILL HAVE TO EXIT AT SPECIFICALLY MARKED GATES.



DISMISSAL WILL BE STAGGERED. STUDENTS WILL BE RELEASED TO THEIR PARENTS OR GUARDIANS AT LA PUENTE PARK. BEFORE THE SCHOOL EXITS OUT TO THE PARK ALL STUDENTS WILL PLACED IN SPECIFIC GROUPS WITH ASSIGNED FACULTY MEMBERS. IF THE PARK IS NOT AVAILABLE THEN STUDENTS MUST BE PICKED UP FROM THEIR CLASSROOM.

TO EFFICIENTLY ALLOW SIBLINGS TO GO HOME TOGETHER & MINIMIZE THE INTERACTION BETWEEN PARENTS & MEMBERS OF THE SCHOOL THE OLDER SIBLINGS WILL REPORT TO THE YOUNGEST SIBLING'S CLASSROOM & WILL BE DISMISSED BY THAT TEACHER. FOR EXAMPLE, THE SMITH FAMILY HAS THREE CHILDREN IN GRADES 8, 6, & 4. THE EIGHTH & SIXTH-GRADER WILL REPORT TO THE FOURTH-GRADE CLASSROOM & BE DISMISSED BY THE FOURTH-GRADE HOMEROOM TEACHER TO THEIR PARENTS.

THIS IS WILL TAKE PLACE THROUGH THE CARPOOL LINE AT THE PARK. PARENTS ARE NOT ALLOWED TO EXIT THE VEHICLE OR INTERMINGLE WITH OTHERS. PARENTS THAT HAVE AN APPOINTMENT AFTER SCHOOL IN THE FRONT OFFICE MUST PARK AND WALK TO THE FRONT OFFICE GATE TO COMPLETE A HEALTH SCREENING BEFORE THEY ARE ADMITTED TO SEE ANY PERSONNEL. AT THIS TIME, WE WILL OBSERVE THE FOLLOWING DISMISSAL SCHEDULE:

- TK & KINDERGARTEN WILL BE DISMISSED WITH THEIR SIBLINGS AT 2:45 P.M.
- 1ST, 2ND, 3RD, & 4TH GRADE WILL BE DISMISSED WITH THEIR SIBLINGS AT 2:50 P.M.
- 5TH, 6TH, 7TH, & 8TH GRADE WILL BE DISMISSED WITH THEIR SIBLINGS AT 2:55 P.M.
- STUDENTS WILL BE PICKED FROM THEIR CLASSROOMS ON RAINY DAYS
- PARENTS WILL HAVE TO BE SCREENED BEFORE ENTERING CAMPUS THROUGH DESIGNATED ENTRANCES AND EXIT IN SPECIFIC GATES.

DIAGRAM 5: DISMISSAL & PICK UP



DISMISSAL SCHEDULE ON EARLY RELEASE DAYS:

- **FRIDAY'S ARE OUR EARLY RELEASE DAYS. DISMISSAL IS NOW AT NOON**
- **STUDENTS WILL NOT HAVE A LUNCH TIME ON EARLY RELEASE DAYS**
- **TK & KINDERGARTEN WILL BE DISMISSED WITH THEIR SIBLINGS AT 11:45 A.M.**
- **1ST, 2ND, 3RD, & 4TH GRADE WILL BE DISMISSED WITH THEIR SIBLINGS AT 11:50 A.M.**
- **5TH, 6TH, 7TH, & 8TH GRADE WILL BE DISMISSED WITH THEIR SIBLINGS AT 11:55 A.M.**
- **STUDENTS WILL BE PICKED FROM THEIR CLASSROOMS ON RAINY DAYS**
- **PARENTS WILL HAVE TO BE SCREENED BEFORE ENTERING CAMPUS THROUGH DESIGNATED ENTRANCES AND EXIT IN SPECIFIC GATES.**

AFTER SCHOOL PROGRAMS



- **CHILDREN THAT ARE NOT PICKED UP 15 MINUTES AFTER THE FINAL BELL WILL GO TO THE SCHOOL AFTER SCHOOL PROGRAM.**
- **PARENTS WILL BE CALLED IF THEIR CHILD IS NOT PICKED UP**
- **ANY AND ALL AFTER-SCHOOL PROGRAM WILL OBSERVE ALL THE SAME PROCEDURES AND PROTOCOLS THAT THE SCHOOL ENFORCES.**
- **THE ONLY EXCEPTION WILL BE DISMISSAL. PARENTS WILL HAVE TO PICK-UP THEIR CHILD THROUGH A DESIGNATED EXIT.**
- **NO ONE WILL BE ALLOWED TO ENTER THE CAMPUS UNNECESSARILY.**
- **AT THIS TIME, WE WILL NOT HAVE ANY AFTER SCHOOL CLUBS, MEETINGS OR SPORTS PROGRAMS**

At the end of the day classrooms will be wiped down cleaned and left readily available and prepared for Religious Ed classes and parish use. After religious education and parish meetings have concluded on the campus the school would then have to be thoroughly cleaned nightly in preparation for the next school day. This is a procedure that I would have to become routine practice seven days a week for the remainder of the school year.

Appendix A

St. Joseph School La Puente Health Check Screening

Date:

Grade	Students Name	Temperature	By checking below, you are stating that you are familiar with St. Joseph's COVID-19 Exposure Control Plan, and you agree to follow all elements of the plan.	Have you been confirmed positive for COVID-19?	Are you currently experiencing, or recently experienced, any acute respiratory illness symptoms; such as fever, cough, fatigue or shortness of breath?	Have you been in close contact with any persons who has been confirmed positive for COVID-19? Or anyone who has traveled and is also exhibiting acute respiratory illness symptoms?
			<input type="checkbox"/> Yes <input type="checkbox"/> No	<input type="checkbox"/> Yes <input type="checkbox"/> No	<input type="checkbox"/> Yes <input type="checkbox"/> No	<input type="checkbox"/> Yes <input type="checkbox"/> No
			<input type="checkbox"/> Yes <input type="checkbox"/> No	<input type="checkbox"/> Yes <input type="checkbox"/> No	<input type="checkbox"/> Yes <input type="checkbox"/> No	<input type="checkbox"/> Yes <input type="checkbox"/> No
			<input type="checkbox"/> Yes <input type="checkbox"/> No	<input type="checkbox"/> Yes <input type="checkbox"/> No	<input type="checkbox"/> Yes <input type="checkbox"/> No	<input type="checkbox"/> Yes <input type="checkbox"/> No
			<input type="checkbox"/> Yes <input type="checkbox"/> No	<input type="checkbox"/> Yes <input type="checkbox"/> No	<input type="checkbox"/> Yes <input type="checkbox"/> No	<input type="checkbox"/> Yes <input type="checkbox"/> No
			<input type="checkbox"/> Yes <input type="checkbox"/> No	<input type="checkbox"/> Yes <input type="checkbox"/> No	<input type="checkbox"/> Yes <input type="checkbox"/> No	<input type="checkbox"/> Yes <input type="checkbox"/> No
			<input type="checkbox"/> Yes <input type="checkbox"/> No	<input type="checkbox"/> Yes <input type="checkbox"/> No	<input type="checkbox"/> Yes <input type="checkbox"/> No	<input type="checkbox"/> Yes <input type="checkbox"/> No
			<input type="checkbox"/> Yes <input type="checkbox"/> No	<input type="checkbox"/> Yes <input type="checkbox"/> No	<input type="checkbox"/> Yes <input type="checkbox"/> No	<input type="checkbox"/> Yes <input type="checkbox"/> No
			<input type="checkbox"/> Yes <input type="checkbox"/> No	<input type="checkbox"/> Yes <input type="checkbox"/> No	<input type="checkbox"/> Yes <input type="checkbox"/> No	<input type="checkbox"/> Yes <input type="checkbox"/> No
			<input type="checkbox"/> Yes <input type="checkbox"/> No	<input type="checkbox"/> Yes <input type="checkbox"/> No	<input type="checkbox"/> Yes <input type="checkbox"/> No	<input type="checkbox"/> Yes <input type="checkbox"/> No
			<input type="checkbox"/> Yes <input type="checkbox"/> No	<input type="checkbox"/> Yes <input type="checkbox"/> No	<input type="checkbox"/> Yes <input type="checkbox"/> No	<input type="checkbox"/> Yes <input type="checkbox"/> No
			<input type="checkbox"/> Yes <input type="checkbox"/> No	<input type="checkbox"/> Yes <input type="checkbox"/> No	<input type="checkbox"/> Yes <input type="checkbox"/> No	<input type="checkbox"/> Yes <input type="checkbox"/> No
			<input type="checkbox"/> Yes <input type="checkbox"/> No	<input type="checkbox"/> Yes <input type="checkbox"/> No	<input type="checkbox"/> Yes <input type="checkbox"/> No	<input type="checkbox"/> Yes <input type="checkbox"/> No